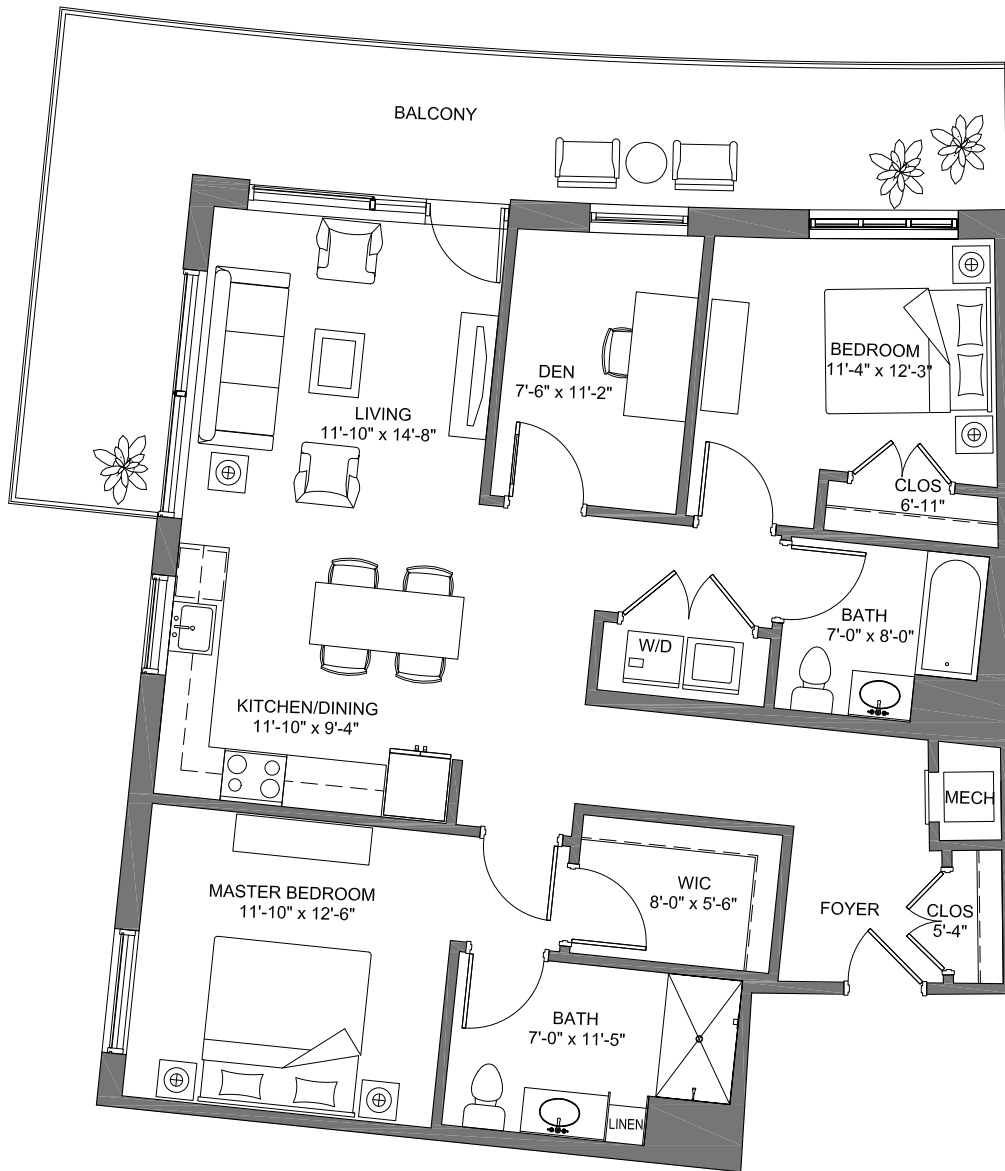


THE MELLEN D-2

Two Bedroom Den
1,237 Square Feet

3rd to 11th Floors



RIVER'S
EDGE

Want a larger home? Ask about combining apartments.

River's Edge Price Comparison Guide

Use our handy comparison chart to evaluate the cost of living at RiverSpring Residences against providing comparable services in your own home. We think you'll be surprised by the cost savings our all-inclusive approach provides.

Monthly Expenses	Your Home	At River's Edge
Monthly Rent/Mortgage		
Property Taxes		\$0
Maintenance/Repairs		\$0
Landscaping		\$0
Transportation/Gas		\$0
24-Hour Security		\$0
Recreation/Entertainment		\$0
Restaurant Dining/Groceries		\$0
Exercise/Wellness Programs		\$0
Daily Light Housekeeping		\$0
Weekly Housekeeping		\$0
Full-Time Concierge Services		\$0
On-Site State-of-the-Art Gym		\$0
Aquatic Therapy Pool		\$0
Total =		



RIVER'S
EDGE